

## Erosion and Sedimentation Control Minimum Requirements

### Single Family Home Construction Site

Establish a gravel construction entrance/exit for the construction site

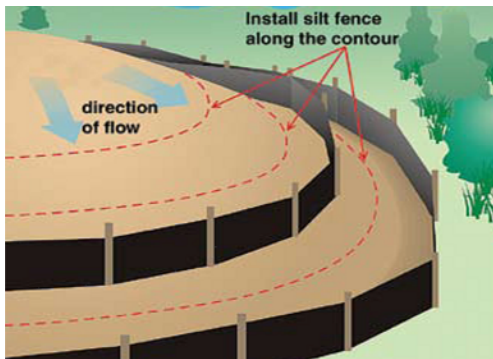
- Minimum 50' long X 20' wide
- Use #57 stone (2"-3" aggregate)

Place and utilize a covered waste receptacle on the construction site

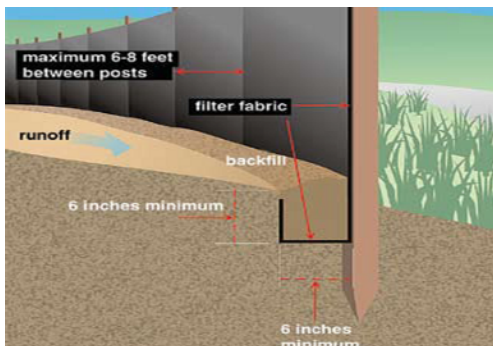
- Prevent rain and wind exposure

Install and maintain perimeter control devices to keep dirt on site during construction

- Utilize silt fence or other methods



**Silt Fence Guidelines**



## Article 13

*of the Jefferson County Subdivision & Construction Regulations requires that dirt remain on the construction site.*

In addition to the minimum requirements, the following practices are recommended to keep dirt on site:

- Phase in clearing the site rather than clearing the entire property at once.
- Use temporary/permanent stabilization on areas not being used for 24 days.
- Permanently stabilize the site as soon as possible.

## Contact Information

Call for Initial inspection	325.5321
Call for Final inspection	325.5321
Stormwater Program	325.8741
Permitting Process	325.5638
Plans Review	325.5638
Zoning	325.5638
Floodplain	325.5638
Environmental Services (Sewer)	325.5801
Health Department (Septic Tank)	930.1230